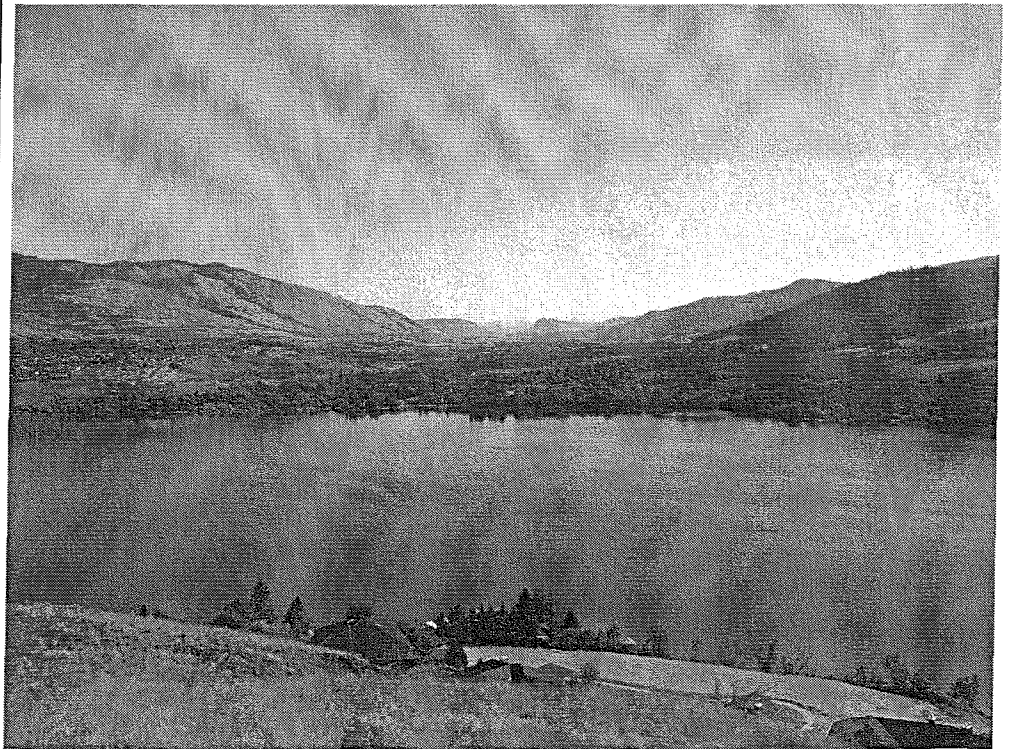


# DISTRICT OF COLDSTREAM

## PROPOSAL FOR PROFESSIONAL SERVICES

### *Agricultural Area Plan*



# TABLE OF CONTENTS

	<b>Page</b>
Introduction .....	1
Work Program .....	3
Project Team.....	7
Budget .....	9
Corporate Profile .....	11
References .....	14

## APPENDICES

Appendix A – Résumés

# INTRODUCTION

---

The District of Coldstream has initiated a planning process to develop an Agricultural Area Plan to support, enhance and promote farming in the District of Coldstream. The Agricultural Area Plan will advance public knowledge of the effects of urban activities on farming and will provide clear policy direction with respect to rural subdivision and guide strategies to promote and protect the rural nature of the District of Coldstream.

Many agencies involved in managing the land base have policies that impact the agricultural sector including, the Ministry of Environment, Ministry of Agriculture and Lands, the Provincial Agricultural Land Commission, the Ministry of Transportation, and the District of Coldstream. The Agricultural Area Plan provides an opportunity to research the regulatory context, examine the status of local agricultural conditions and resource base and consider opportunities and constraints for the agricultural sector. The planning process will engage the agricultural community in a comprehensive process and produce a plan that guides future decision making in a manner that will benefit agriculture.

The Agricultural Land Reserve (ALR) regulations and the Right to Farm legislation provide both guidance and protection of agriculture and agricultural land but there are both internal and external pressures for change. The growth in agri-tourism, farm gate sales, changing markets and competing demands for water are examples of local change within the agricultural sector. External pressures have also increased as urban uses (residential, industrial and commercial) expand towards ALR boundaries and rural residential acreages continue to be a favoured form of development. The Agricultural Area Plan provides an opportunity to review the current agricultural context and consider policy options for enhancing the agricultural sector. All policies must be within the jurisdiction of the District but may include new strategies such as the Delegation Authority Agreement or Farm By-law.

TRUE Consulting Group has assembled a project team to provide extensive knowledge of the local area, agricultural and community planning, and public process for this Agricultural Area Plan proposal. In addition to the primary project team members, we also provide strong support and technical staff.

A planning project of this nature tends to have many possible scales of resolution. After careful consideration, we have put forth a program that we feel will result in a high quality product completed in a time efficient manner. If prior to awarding this project you wish to review our work program and perhaps simplify or add to it, we would be pleased to meet with you to more fully discuss your requirements and adjust our parameters accordingly.

# WORK PROGRAM

---

## *Phase 1 – Project Initiation*

The project will commence upon authorization from the District of Coldstream with a planned start date in late June or early July. The project initiation meetings will provide an opportunity for the Project Team to meet with District staff and the Agricultural Advisory Committee (AAC) to review project information requirements, mapping and scheduling.

### Tasks

- meet with District staff.
- meet with AAC. The AAC will be encouraged to act as a strong liaison with local farmers and farm industry representatives and to provide input on agricultural issues, trends, constraints and opportunities.
- meet with District staff to obtain relevant digital data including:
  - cadastral mapping
  - ALR boundaries
  - water servicing
  - Ministry of Agriculture, AgFocus inventory data
  - assessment folio information
  - Ministry of Agriculture, Survey of Agriculture, Census of Canada agricultural statistics, 2006
  - infrastructure planning and development strategies
  - development trends
  - District ALR review

## *Phase 2 – Background Research & Reporting*

The background research will provide a profile of the plan area in terms of physical, social and economic conditions. Research will demonstrate an understanding of regional and provincial issues but will concentrate on issues that can be dealt with locally, by the District.

Agricultural suitability will be investigated at this stage by the agrologist on the project team. Staff from the Ministry of Agriculture will also be consulted to assist with the collection and

interpretation of information. Thematic information that will be developed at this stage will include:

- soils inventory
- available water storage capacity of soils
- agricultural capability
- climate capability for agriculture

The Ministry of Agriculture and Lands (MAL) has collected some of the background information necessary for this plan, particularly an agricultural land use and activity inventory. MAL is currently completing the database consistent with the AgFocus data collection process and will make this information available for the plan. The AgFocus, research is collected in a GIS format and can be integrated with District property information (e.g. land tenure and property assessment classifications) to provide comprehensive information on the agricultural community. There are several opportunities for area specific research using the District, Ministry of Agriculture and Lands, and agrology information.

Topics include:

- analysis of parcel size and land use relationships
- mapping of residential assessments for building improvements (e.g. houses) as an indication of non-farm investments
- relationship between the available water storage capacity of soils and potential irrigation demand

An important part of the background research phase will involve the contacting of relevant agencies. The District of Coldstream will provide an agency contact list and referral letters will be sent to relevant agencies to advise them of the planning process and request relevant background information.

The AAC will provide valuable input at this research stage particularly in applying their knowledge of the local area. AAC members may be relied upon to identify “local experts” who will be contacted by the project team to enhance knowledge of the area’s agricultural industry.

All information will be assembled in a Background Report and reviewed with the AAC. The report will remain as a draft until the project is finalized so that additional information may be

incorporated as the project progresses. The Background Report will be available for posting on the District's web site. A referral to Council is recommended to keep Council apprised of the process and data collected.

### **Tasks**

- review of agricultural context and resource base
- assembly and analysis of relevant data including information on: climate, soils, agricultural capability, cadastre, zoning, water supply, water use, agricultural activities, agricultural economy and employment and development trends
- field work
- referrals to relevant agencies
- consultation with agricultural sector contacts identified by AAC members
- attend AAC and project team meetings
- review of agricultural infrastructure (water, roads, employment)
- review of regulatory framework (e.g. ALR policies, OCP policies, Zoning By-law regulations and subdivision standards)
- preparation of Background Document

### ***Phase 3 – Opportunities and Constraints***

The completion of the Background Report provides comprehensive information on the status of agriculture and agricultural lands in Coldstream. Based on this information the community will be in a position to engage in an informed discussion of opportunities and constraints associated with agriculture. TRUE will facilitate discussions with the AAC and will host a public meeting to solicit input from the community. Additionally, TRUE will have follow-up discussions with the local referral agencies to complete discussions on opportunities and constraints.

### **Tasks**

- meeting with AAC to brainstorm opportunities and constraints and discuss public consultation strategy
- preparation of public consultation materials
- hosting of public consultation event
- integration of opportunities and constraints summary into Background Report

#### *Phase 4 – Agricultural Area Plan*

An Agricultural Area Plan will be prepared to address priority issues and opportunities. The draft will be reviewed with staff and the AAC. When there is relative agreement on the content of the draft plan, there will be a public Open House to review the plan. The plan will be posted to the District's website and advertisements posted in the local newspapers. The AAC members will also be encouraged to raise awareness of the Plan in the community and to promote the public consultation process.

An Open House will be held to present the Plan. TRUE will create posters to illustrate plan policies in a highly visual format. An exit survey will be used to gauge public response to the plan. The plan posters and the exit survey will be posted on the website to allow additional opportunities for public consultation.

Public input will be analyzed and reviewed with the AAC. Adjustments to the Plan will be completed as required.

#### **Tasks**

- preparation of draft Agricultural Area Plan.
- review with staff, AAC.
- circulation of draft plan for agency review.
- preparation of materials for Open House presentations.
- host Open House.
- review feedback with Staff and AAC.
- finalize plan.

#### *Phase 5 Implementation*

Throughout the planning process TRUE will become familiar with the local policy context for agriculture. Once the plan is formalized TRUE will be able to provide the documentation necessary for the District to undertake any amendments required to implement plan policies through the Zoning By-law or Official Community Plan. Project team members have extensive experience with the development of public policy and will be able to present creative policy strategies.

# PROJECT TEAM

---

To undertake this project we have designated a highly experienced senior team offering experience in community planning, agricultural area planning, agronomy, and the facilitation of public planning processes. For this project TRUE will collaborate with Dave Whiting Consulting to ensure a strong foundation in Agricultural Area planning. Collectively these individuals have been engaged in Agricultural Area Plans for the District of Salmon Arm; the Regional District of the Central Okanagan; District of Summerland; and the District of Lake Country.

The project team will take a service-oriented approach to this project and will provide an accessible and accountable core team throughout the entire planning process.

*Jane Mastin, MCIP*

**Project Manager/Project Planner**

Jane's responsibilities will include coordination of all planning functions and liaison with the District referral agencies, the Agricultural Advisory Committee, community groups and the public. Jane will be responsible for managing the overall project in terms of both scheduling and budget.

Jane has been with *TRUE* Consulting Group for 10 years and has over 25 years of experience in the field of planning. Jane's practice is focused on the B.C. Southern Interior.

Jane has worked with agricultural lands in all stages of the planning process. Jane has developed Official Community Plan policies for agricultural lands, and has managed applications for lands within the ALR and has experience preparing Agricultural Area Plans.

Some of Jane's recent project experience relevant to this assignment are:

- City of Kamloops Aberdeen Neighbourhood Plan
- District of Lillooet Official Community Plan
- Columbia Shuswap Regional District – Area B Official Community Plan
- District of Sicamous, Growth Management Plan and ALR Review
- Regional District of the Central Okanagan, Agricultural Area Plan

- District of Salmon Arm Agricultural Area Plan
- Town of Oliver, Wine Capital Project
- Village of Clinton, Official Community Plan
- District of Salmon Arm Official Community Plan

*Dave Whiting, P. Ag., MCIP*

Dave's responsibilities will include the preparation of components of the background report including the analyses of agricultural data through the preparation of maps and tables. He will also participate in public consultation forums, meetings with the AAC, and assist in the preparation of documents.

Dave has over 25 years experience in planning and policy development. Some of Dave's recent project experience relevant to this assignment is:

- currently a member of the planning team developing a North Okanagan Food System Plan for the Regional District of the North Okanagan and other partners
- currently a member of the planning team developing an agricultural plan for the District of Kent
- Lake Country Community Agriculture Plan
- District of Summerland Agriculture Plan

# BUDGET

---

A project budget for the Agricultural Area Plan is presented in the tabulation following. The budget is derived on the basis of time allocations to each component of the project as described in the Work Program Section. The budget, as presented, is all inclusive of disbursements except for the following:

- Goods & Services Tax
- media advertising (i.e. newspaper notices of public meetings)
- rental charges, if applicable, for meeting rooms.
- printing costs (except for presentation materials required for public meeting presentations and documents and deliverables as specified in the Terms of Reference – 10 copies of Background Report and 10 copies of Draft Plans).

The deliverables will be as noted in the Terms of Reference. The Agricultural Area Plan will require professional consulting services, with fees and disbursements totaling \$42,550.00.



## CORPORATE PROFILE

---

TRUE Consulting Group (TRUE) has provided engineering, planning, and urban design consulting services to Municipal, Regional District, Provincial, First Nation Communities, and private sector clients in the central and southern interior of British Columbia since 1986. TRUE has developed a solid business and technical reputation, as a stable, well established consulting firm, and strives to deliver professional services with a focus on creative solutions, technical detail, and adherence to schedules, and budgets.

Since formation in 1986, the firm has expanded in response to an increased client list and project workload. Today, TRUE has a total staff of thirty and continues to grow. Our office in Kamloops has five Professional Engineers, a Professional Planner, three Senior Engineering Technicians, and support staff. TRUE has a satellite office in Williams Lake with a staff of five to provide efficient cost-effective service to clients in the region. TRUE also has an office in Kelowna which is managed by two professional engineers, with technical and support staff.

It is the objective of TRUE to provide responsive and personalized service to our clients and maintain the highest levels of professionalism, consistency, and effectiveness. The key difference between TRUE and other consultants is the ability to provide extensive senior input throughout all stages of a project to ensure a high level of quality control. We strive to maintain a close, responsible, and professional working relationship between senior project personnel and the client.

Our firm has long standing working relationships with clients as well as municipal, regional, provincial, and federal government approval agencies throughout the central and southern interior area of the province such as the Ministry of Environment, Ministry of Transportation, Health Canada, and Fisheries and Oceans Canada. The firm recognizes these relationships as being of fundamental importance to assisting clients in achieving their project objectives.

TRUE maintains good working relationships with utility companies such as BC Hydro, Telus, Terasen, and Cable services. TRUE has developed a network of specialized subconsultants such as legal surveyors, environmental consultants, market researchers, landscape architects and geotechnical, structural, electrical, mechanical, and environmental engineers whose services are frequently employed on various projects. TRUE also works well with Architects

in providing civil engineering services such as site grading and servicing, for building sites such as schools, multi-family developments, and shopping centers.

From the inception of the firm in 1986, developing and maintaining responsive and personalized client relationships has been a fundamental objective. All of our senior staff are directly involved in technical and project management aspects of projects. The firm does not have any management-only positions where an individual may be concerned primarily with business development or office management. Our senior staff are therefore in the position of being able to respond directly to any client inquiries.

Our firm attempts, to the greatest extent possible, to develop ongoing working relationships with our clients. These ongoing relationships are maintained by being responsive to the client's requirements and completing projects within established schedule and budget constraints. Some of our clients include:

#### Regional, Municipal & First Nations

- Alexandria Indian Band
- Alexis Creek First Nation
- Barriere Improvement District
- Blue River Improvement District
- Canim Lake Indian band
- Cheslatta Carrier Nation
- City of Armstrong
- City of Kamloops
- City of Salmon Arm
- City of Penticton
- City of Williams Lake
- District of Clearwater
- District of Lake Country
- District of Sicamous
- District of Lillooet
- Kamloops Indian Band
- Ministry of Transportation
- Quesnel Indian Band
- Rayleigh Waterworks District
- Regional District of Central Okanagan
- Regional District of Okanagan-Similkameen
- Siska Indian Band
- Skeetchestn Indian Band
- Thompson-Nicola Regional District
- Thompson Rivers University
- Tl'etinqox-T'in Community
- Toosey Indian Band
- Town of Oliver
- Town of Osoyoos
- Town of Princeton
- Williams Lake Indian Band
- Xenigwet'in First Nations Govt.

### Land Development

- Bell Star Resorts (Hotel Resort)
- Copper Point, Windermere (Recreation)
- Culos Developments (Residential/Commercial)
- Juniper West (Residential)
- Mabel Lake Resort (Recreation)
- Mt. Baldy Ski Resort (Recreation)
- Pioneer Log Homes (Residential/Commercial)
- Shape Properties (Commercial)
- SmartCentres (Commercial)

## REFERENCES

---

### *City of Kamloops Aberdeen Area Plan*

Jane is currently the project manager and lead project planner on a project for the City of Kamloops that involves preparation of a neighbourhood plan in one of the City's largest growth areas. Jane has coordinated a planning process that involves the key stakeholders (developers and landowners) and a full public consultation process.

Project Reference: Mr. Randy Lambright, Planning Manager, City of Kamloops  
Tel: (250) 828-3565

### *Regional District of Central Okanagan, Agricultural Plan*

Jane managed the preparation of a comprehensive Agricultural Plan for the Central Okanagan Regional District. This project is an example of Jane's ability to complete a project within a short time frame (4 months). The first phase of this project required data analysis, community consultation and best practices research and the preparation of a Background Report. The second phase of the project required preparation of a comprehensive policy document. The project concluded with public consultation events and a presentation to the Environment and Planning Committee of the Board of Directors.

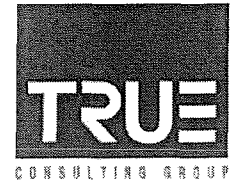
Project Reference: Ilene Watson, Planner, Central Okanagan Regional District  
Tel: (250) 868-5236

### *Official Community Plan, District of Salmon Arm (2002)/Agricultural Area Plan*

TRUE prepared a Community Plan for the District of Salmon Arm, including a detailed analysis of projected municipal growth. A background report initiated the planning process and provided the basis for community discussion on a variety of issues. Revised parks planning policies were part of the work integrated into the new Official Community Plan. TRUE was also contracted to prepare an Agricultural Plan for Salmon Arm.

Project Reference: Mr. Carl Bannister, Chief Administrative Officer, District of Salmon Arm  
Tel: (250) 832-6021

## APPENDIX A – RÉSUMÉS



## JANE MASTIN, M.C.I.P.

Jane Mastin, B.A. M.A., Dip. Urban Land Economics, M.C.I.P., is a Professional Planner with over 20 years experience in both the public and private sectors. Her interest and experience has been obtained throughout Canada, with a particular focus on the interior of British Columbia. Her responsibilities have included project management, community planning, comprehensive development planning, social planning, facilitation and mediation.

### EDUCATION

- ◆ Diploma: Urban Land Economics – Property Management  
University of British Columbia, 1989
- ◆ Master of Arts – Geography, University of Victoria, 1982
- ◆ Bachelor of Arts – Geography/Urban Studies  
York University, 1979

### EMPLOYMENT BACKGROUND

- ◆ 1997 – Present, Planning Consultant, Kamloops
- ◆ 1992 – 1997, Planner, City of Kamloops
- ◆ 1988 – 1990, Planning Consultant, Kamloops
- ◆ 1988 – 1992, Geography Instructor, University College of the Cariboo, Kamloops
- ◆ 1987 – 1988, Project Planning Manager, City of Kamloops
- ◆ 1985 – 1987, Community Development Planner, City of Kamloops
- ◆ 1983 – 1985, Planner, City of Kamloops
- ◆ 1981 – 1982, Planner, B.C. Parks, Thompson-Okanagan Region

### PROFESSIONAL AFFILIATIONS

- ◆ Canadian Institute of Planners, B.C. Chapter
- ◆ Mediation Services Group, City of Kamloops

### SKILL AND EXPERIENCE SUMMARY

- ◆ Extensive knowledge of planning legislation, policies, procedures, development approval process and public involvement
- ◆ Management and preparation of community planning projects
- ◆ Facilitation of public meetings and workshops
- ◆ Mediation of community conflicts
- ◆ Completion of community research projects

STATUTORY PLANS, BY-LAWS, DOCUMENTS AND STUDIES

- ◆ Columbia Shuswap Regional District, Area 'B' Official Community Plan, December, 2007
- ◆ Kamloops Social Plan, City of Kamloops and the Social Planning Council of British Columbia, November, 2007.
- ◆ Kamloops Community Plan on Homelessness, Service Canada, September, 2007.
- ◆ Juniper West Neighbourhood Plan, Tercon Services Ltd., September 2007.
- ◆ District of Lillooet, Official Community Plan (Draft), September, 2007.
- ◆ Homeless Count, Kamloops 2006.
- ◆ Growth Management Strategy, District of Sicamous, 2006.
- ◆ Kamloops Food Action Strategy, 2006.
- ◆ Thompson-Nicola Regional District, Official Community Plan Updates, 2006.
- ◆ Town of Oliver & Land & Water BC, Wine Village Concept Plan, 2005.
- ◆ Regional District of Central Okanagan Agricultural Plan, 2005.
- ◆ Osoyoos Indian Band, Northwest Sector Plan, 2005.
- ◆ Columbia Shuswap Regional District, Issue Identification and Planning Education Project, 2004.
- ◆ District of Salmon Arm, Agricultural Area Plan, 2004.
- ◆ Land & Water BC, Lake Revelstoke Land Inventory, 2004.
- ◆ City of Kamloops, Youth Service Inventory, 2004
- ◆ University College of the Cariboo, Williams Lake Campus Plan, 2003.
- ◆ Village of Clinton, Official Community Plan, 2003.
- ◆ Skeetchestn Indian Band, Phase 1 Environmental Site Assessment, 2003.
- ◆ District of Sicamous, Boundary Expansion Study, 2003.
- ◆ Kamloops Community Committee on Homelessness, Inventory of Service Assets & Gaps, 2003.
- ◆ Kamloops Community Committee on Homelessness, Interim Evaluation, 2003.
- ◆ Alexis Creek First Nation and Canim Lake Band, Physical Development Plans, 2002.
- ◆ District of Salmon Arm, Official Community Plan, 2002.
- ◆ Thompson Cariboo Addictions Services Discussion Paper, December 2001
- ◆ The City of Kamloops and University College of the Cariboo, McGill Corridor/Southgate Project Concept Plan, December 2001.
- ◆ South Shuswap Official Community Plan and Zoning By-law Amendments, December 2001.
- ◆ Site Feasibility Study for Clinton Health & Wellness Centre, Village of Clinton, November 2001.
- ◆ Kamloops Community Plan on Homelessness, August 2001.
- ◆ Inventory of Service Assets and Gaps for the Aboriginal Homeless in Kamloops, July 2001.

- ◆ Official Community Plan Review Background Discussion Papers, District of Salmon Arm, 2001.
- ◆ South Shuswap Official Community Plan Town Centre and Related Commercial Land Use Study, Columbia-Shuswap Regional District, June 2001.
- ◆ Kamloops Downtown Residents Association, Community Development Project, City of Kamloops, 2001.
- ◆ Clearwater Local Governance Study, 2000.
- ◆ Pier Mac Industrial Business Park Area Structure Plan, City of Kelowna, March 2000.
- ◆ John Tod Neighbourhood Community Development Project, City of Kamloops, 2000.
- ◆ Community Development Plan, Spallumcheen Indian Band, 2000.
- ◆ Addition to Reserve Study, Fraser Valley Tribal Council 1999.
- ◆ Zoning By-law, Upper Nicola Band, 1999.
- ◆ Juniper/Rose Hill Neighbourhood Plan, City of Kamloops, 1998.
- ◆ Merritt North Bench Crown Land Plan, B. C. Assets and Land Corporation, 1998.
- ◆ Sahali Town Centre Development Permit Area Regulations, City of Kamloops, 1997.
- ◆ Study of Alternate Dispute Resolution Strategies and Approaches, City of Kamloops, 1994.
- ◆ Multi-Family Zone & Development Permit Area Review, City of Kamloops, 1992-1993.
- ◆ Industrial Zone Review, City of Kamloops, 1989.
- ◆ Landscape and Screening By-law, City of Kamloops, 1989.
- ◆ Zoning By-law Review, City of Nanaimo, 1989.
- ◆ South East Sector Comprehensive Development Plan, City of Kamloops, 1986.

#### RECENT PRESENTATIONS & FACILITATION SESSIONS

- ◆ *Strategic Planning Workshop*, Kamloops Parks & Recreation Commission, October, 2007
- ◆ *Planning Institute of British Columbia, 2007 Conference*, Presentation of Urban Agricultural Strategies for Kamloops.
- ◆ Airport Advisory Committee, Kamloops, 2006.
- ◆ Food Action Forum, Kamloops Food Policy Council, 2006.
- ◆ Strategic Planning Workshop, Kamloops Community Asset Building Committee, 2005.
- ◆ Strategic Planning Workshop, Kamloops Boys & Girls Club, 2003.
- ◆ *Mediation Coaching*, City of Kamloops, June 2002.
- ◆ *Strategic Planning Workshop*, Kamloops Wildlife Park, February, 2002
- ◆ *Strategic Plan*, Boys and Girls Club of Kamloops, April 1999 and update January, 2002.
- ◆ *Strategic Planning Workshop*, University College of the Cariboo, Alumni Association, October, 2001.

RECENT FACILITATION SESSIONS (continued)

- ◆ *Alternate Dispute Resolution*, Business Improvement Area Association of British Columbia, Annual General Meeting. Kamloops, spring 2000
- ◆ *Moving Beyond the Sandbox: Skills and Strategies for Effectively Resolving Conflict and Building Community* – Facilitation Coach, City of Kamloops, February 2000
- ◆ Neighbourhood Mediation/Facilitation Projects. Recent projects have involved conflict resolution strategies to address the development of social housing projects, infill subdivisions and rezoning applications. Ongoing, 1994 – present
- ◆ *Strategic Plan and Renewal Strategy*, South West Business Improvement Area Association, 1999

TEACHING AND RESEARCH EXPERIENCE

- ◆ City of Kamloops - *Municipal Housing Survey, Analysis of the Impact of College Expansion on the Housing Market* (1992)
- ◆ Department of Social and Environmental Studies, University College of the Cariboo  
Courses taught include: *Introduction to Cultural Geography; Urban Geography and Planning; Regional Geography of British Columbia and the Yukon; Economic Geography; Regional Geography of Canada*, 1988 – 1992
- ◆ B.A. Thesis: *Residential Migration in Metropolitan Toronto*
- ◆ M.A. Thesis: *Soundscape Analysis: A Case Study of the South Fairfield Soundscape*
- ◆ Institute of Urban Affairs Conference, University of Winnipeg, *Comprehensive Development Planning*, 1988

---

## **David Whiting P.Ag, MCIP**

(250)372-7088

#4 - 576 Nicola Street, Kamloops, BC V2C 2R1  
dave.whiting@shaw.ca

### **Professional Profile**

A seasoned land and resource planning professional who is a professional member of both the BC Institute of Agrologists and the Planning Institute of British Columbia. Dave Whiting has a professional interest in managing the urban-rural interface, partnership development, and extension/education initiatives

- Strong facilitation skills with stakeholder groups
- Operational planning skills
- Strategic land use planning skills
- Strong instructional skills
- Strong project management skills
- Agricultural Plan development skills
- Competent computer skills including developing basic websites
- ArcView GIS skills
- Strong technical writing skills
- Strong coordination skills

### **Professional Experience**

Dave Whiting Consulting, Kamloops, BC

2004 - present

#### **Planning Consultant**

##### Achievements:

- Member of the consulting teams that developed the Summerland Agricultural Plan (2006) and the Lake Country Community Agriculture Plan (2007)
- 2006 - defined a "Food Security Mapping System" pilot project for Interior Health
- Member of consulting team that proposed a revised land management policy for Ministry of Tourism, Sports and the Arts
- 2007 - Coordinated a partnership with UBC Okanagan, Interior Health and Kelowna Food Bank to undertake community food security mapping in Kelowna
- Coordinating an ongoing community food security mapping project in Kamloops on behalf of Fraser Basin Council and in partnership with Make Children First and Thompson Rivers University
- Since 2004, developed and coordinates the Kamloops-South Thompson Mapping and Capacity Partnership and associated Kamloops-South Thompson Sustainable Community Atlas

##### Responsibilities:

- research and report writing
- preparing GIS products for plan documents using local and provincial data.
- preparing public information products including open house displays, brochures, and websites

- coordinates meetings including preparing agendas, facilitating discussion, and preparing meeting summaries
- directs and coordinates volunteers and support staff
- preparing funding proposals

Thompson Rivers University, Kamloops, BC  
2004 - present

**Part-time Instructor**

Achievements:

- Teaches a 4<sup>th</sup> year course in resource policy and planning on an ongoing basis since 2004
- Teaches a 3<sup>rd</sup> year course on Tourism Land Use since 2005
- Taught 2<sup>nd</sup> year introductory Agricultural Science course in 2005

Responsibilities:

- Faculty responsibilities include course preparation, teaching, supporting students and colleagues, and administrative duties

Province of BC, Ministry of Sustainable Resource Management, Kamloops, BC  
2001-2004

**Program Manager, Kamloops Inter-agency Management Committee**

Achievements:

- Co-ordinated cross-agency land use initiatives including strategic land use plan development, approval, and implementation
- Co-ordinated and negotiated government to government agreements with First Nation governments on behalf of provincial resource agencies regarding strategic land use planning

Responsibilities:

- Supervised up to nine professional staff including planners, engineers, agrologists, foresters, and biologists
- Participated as a member of the Regional Management Team within the regional office

Province of BC, Ministry of Environment, Lands and Parks, Kamloops, BC  
1999-2001

**A/Manager, Planning and Assessment**

Achievements:

- Led a team of nine professional staff that participated in strategic planning processes (Land and Resource Management Plans, Regional Growth Management Strategies, Environmental Impact Assessments)

Responsibilities:

- Supervised up to nine professional staff including planners, engineers, agrologists, foresters, and biologists
- Participated as a member of the Regional Management Team within the regional office

Province of BC, Okanagan-Shuswap Land and Resource Management Plan  
1995 - 2001

**Inter-Governmental Coordinator**

Achievements:

- Member of the Provincial Government team that led a five-year multi-stakeholder, consensus process to develop a strategic land use plan for the Crown land and resources of the Okanagan and Shuswap areas of Southern British Columbia (2.5 million ha).
- Outcome of the process was a plan approved by cabinet that established new Provincial Parks, and provided resource management zones with associated strategic direction for the management by provincial agencies of timber, water, viewscales, land alienation, wildlife and biodiversity.

Responsibilities

- developed specific terms of reference for local government and First Nations that recognized each of their unique characteristics so as to ensure meaningful involvement in the various stages of the planning process
- chaired meetings of participating provincial agencies (the Interagency Support Team) to ensure a consistent government approach and resolve cross agency conflicts before engaging public stakeholders
- facilitated working groups of the planning table to develop resource management direction (objectives and strategies) for fish, water, Crown land alienation, and the Community – Crown interface
- delivered training programs to First Nations, local governments and stakeholders to equip participants for plan development and plan implementation

Province of BC, BC Lands, Kamloops and Fort St. John, BC  
1981-1995

**Various positions**

Achievements:

- As a Professional Agrologist, made recommendations on applications for Crown land for agricultural, commercial, industrial and conservation uses on specific parcels of Crown land
- As a planner, prepared Crown land plans to guide the alienation of Crown land for agricultural, commercial, industrial and conservation purposes

Responsibilities:

- Scope of activities included both upland and aquatic land in the Peace and Thompson-Okanagan Regions

**Education**

Simon Fraser University, Burnaby, BC  
**Master of Natural Resource Management**  
1982

University of British Columbia, Vancouver, BC  
**Bachelor of Arts (Physical Geography)**