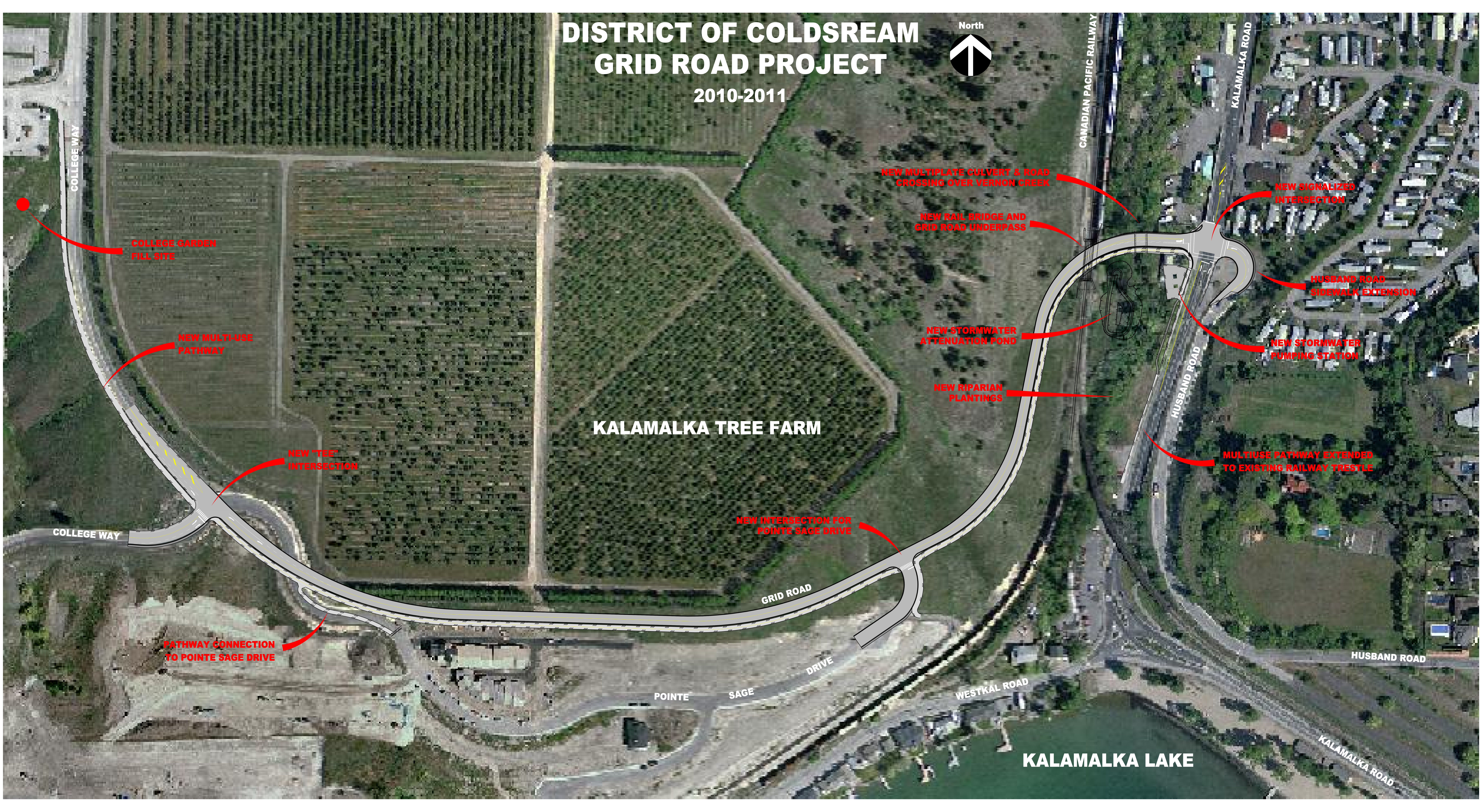


# DISTRICT OF COLDSREAM GRID ROAD PROJECT

2010-2011



COLLEGE GARDEN  
FILL SITE

NEW MULTI-USE  
PATHWAY

NEW "TEE"  
INTERSECTION

PATHWAY CONNECTION  
TO POINTE SAGE DRIVE

KALAMALKA TREE FARM

NEW INTERSECTION FOR  
POINTE SAGE DRIVE

NEW MULTIPLATE CULVERT & ROAD  
CROSSING OVER VERNON CREEK

NEW RAIL BRIDGE AND  
GRID ROAD UNDERPASS

NEW STORMWATER  
ATTENUATION POND

NEW RIPARIAN  
PLANTINGS

CANADIAN PACIFIC RAILWAY

NEW SIGNALIZED  
INTERSECTION

HUSBAND ROAD  
SIDEWALK EXTENSION

NEW STORMWATER  
PUMPING STATION

MULTIUSE PATHWAY EXTENDED  
TO EXISTING RAILWAY TRESTLE

HUSBAND ROAD

HUSBAND ROAD

POINTE SAGE DRIVE

WESTKAL ROAD

KALAMALKA LAKE

KALAMALKA ROAD